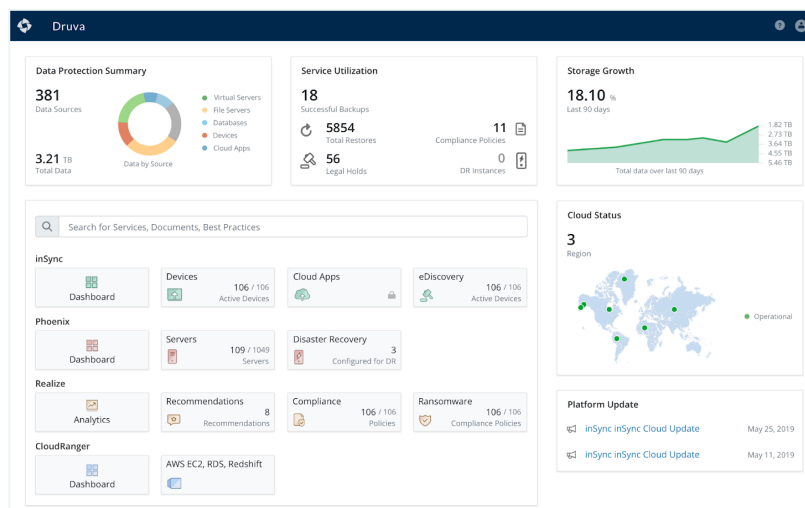


# Druva for Microsoft 365 Backup

If your organization needs to protect enterprise Microsoft 365 data, including Exchange Online, OneDrive, SharePoint, and Teams from common risks like accidental deletion, file corruption, insider attacks, and ransomware, you need the infinite scale and simplicity of 100% SaaS protection. Druva's industry-leading, 100% SaaS data protection, backup, and recovery platform protects your Microsoft 365 data and keeps your company compliant with data retention, legal hold, and eDiscovery. Druva supports other cloud apps and endpoints as well, so you only need one easy-to-manage platform to protect data in your SaaS apps, devices, and multi-cloud environments.



Manage all of your workloads from a single pane of glass

## Data backup and retention

### Easy-to-use centralized console

Intuitive interface allows global visibility of Exchange Online, One Drive, Sharepoint, Teams, and endpoint backup snapshots. Easily automate backups without end-user intervention.

### Flexible retention

Druva offers optional unlimited or customizable data retention for Microsoft 365 to meet enterprise data retention and compliance needs.

### Cloud to cloud with zero infrastructure

Microsoft 365 files are backed up directly from Microsoft Azure to the Druva Data Resiliency Cloud on AWS. Druva customers do not have additional

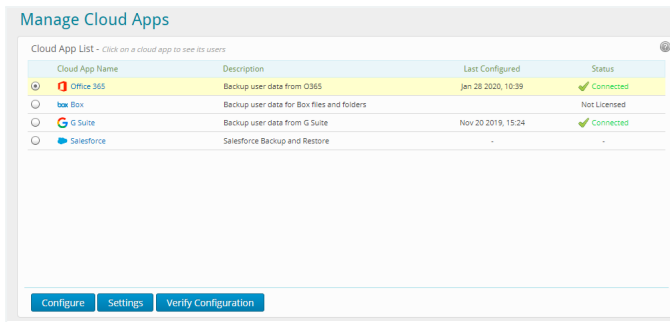
cloud storage or hardware costs. Agentless architecture improves recovery data performance and avoids taxing your WAN bandwidth or latency.

### Agentless data protection

Configuration is straightforward — connect to your Microsoft 365 tenant using an admin account and specify backup parameters — no agents required.

### First full and forever incremental backup

Only one full backup is ever needed because of Druva's patented global dedupe technology. Subsequent backups take less time and consume less storage space. IT teams certainly love saving time and money — Druva enables them to focus on business-critical functions, freeing them from needing to update or maintain the data protection solution.



Comprehensive support for cloud application

## Flexible backup schedule

Druva's profile-based architecture enables independent backup frequencies for different user groups.

## Large file support

There are no limits to the size of an individual file that can be protected and restored with Druva's cloud architecture.

## Backing up in-use or open files

Druva's unique technology enables the backup of files that may be open and in use during backup runtimes, ensuring all files are protected.

## Multi-geo support

With AWS storage regions across the globe, backups can be stored, retained, processed, and managed within a specific country or region to meet enterprise latency and data residency requirements.

## Data retention of inactive and terminated employees

Druva retains data for inactive and terminated employees, eliminating the need to purchase and maintain additional Microsoft 365 licenses or invest in more expensive pricing plans.

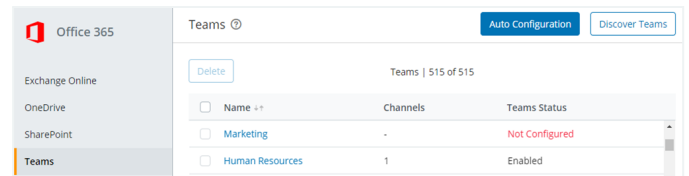
## Reliable backups

Dedicated algorithms, including error-checks and retries, ensure backup completion and data integrity, regardless of Microsoft throttling.

## Data recovery

### User self-serve restore support

Users are empowered to restore Exchange Online and OneDrive without IT admin intervention.



## Search and restore

Quickly identify content for recovery based on metadata such as file type, owner, date created, email subject, and date modified.

## Point-in-time recovery

Recover quickly from any time-based snapshots using a simple and intuitive interface.

## Granular files and metadata restore

Perform granular recovery of Exchange Online emails, folders, calendars, OneDrive files, SharePoint site with metadata, timestamp, and permissions.

## Bulk and folder level restore

Druva allows recovery of multiple Microsoft 365 files and object metadata from any point-in-time snapshots.

## Restore to any location

Restore data from any backup snapshot to an alternate destination.

## Restore chain of custody/audit trail

Druva maintains a tamper-proof log of all the admin restore activities and locations, which is admissible as evidence in a court of law.

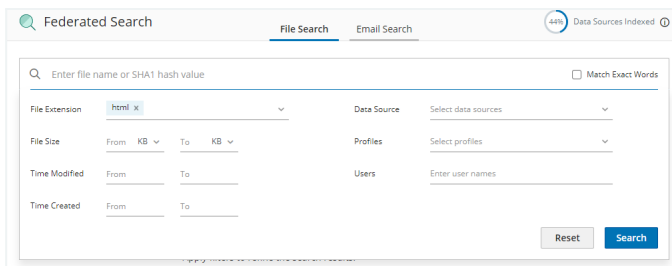
## Restore API

Druva APIs can be leveraged by third-party applications for restoring objects programmatically, eliminating the need for manual intervention.

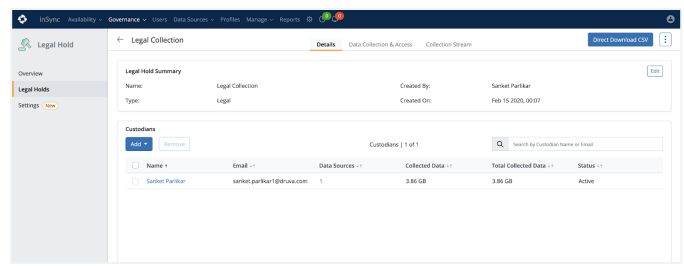
## Data security and privacy

### Digital envelope encryption

Druva-managed keys use enterprise-grade digital envelope encryption in-transit (256-bit TLS) and at-rest (AES 256-bit) for the highest levels of data security and privacy of your Microsoft 365 backup data.



Federated metadata search across all workloads for ransomware and security investigations, eDiscovery, and compliance



Centrally manage and automate legal hold across workloads

## Granular access controls

Global or Profile admins can be set up to support delegation of backup and restore responsibilities to different groups to prevent data loss attributed to disgruntled employees/rogue admins.

## Audit tracking and logging

Ensure visibility and trackability of restores for files containing sensitive and proprietary information.

## FedRAMP compliance

If you are a contractor of the US Federal Government, Druva is FedRAMP compliant and can protect your Microsoft 365 GCC environment.

## Security certifications

Druva is compliant with SOC 1, ISAE 3402, SOC 2, SOC 3, ISO 27001, PCI DSS Level 1 (Cloud), and HIPAA regulations.

## Data and metadata separation

Druva stores Microsoft 365 data, metadata, and encryption keys separately for an additional layer of security that extends beyond data encryption.

## Data privacy

To fully protect sensitive data privacy, Druva is designed so that your own Druva admins as well as Druva employees may not view end-user data stored in the Druva Data Resiliency Cloud.

## Ransomware recovery

### Data isolation for ransomware recovery

To recover from data corruption of customers' Microsoft 365 environment Druva provides

“data cocoon” – true isolation of backup data from customer-controlled storage environments.

## Unlimited retention

Druva offers unlimited retention for Microsoft 365, enabling ransomware recovery from a clean snapshot, even if the malware has been present in your environment and infecting your data for months.

## Security investigations

Federated search of metadata attributes enable Information Security teams to search through Microsoft 365 files across users, end devices, and storage locations, to track infected files, determine sequence of events, and analyze the scope and location of the attack.

## eDiscovery and legal hold

### Unified legal hold

Unified legal hold management enables proactive collection and preservation of Microsoft 365 and endpoints data and its electronic chain of custody, until it is extracted, processed, and analyzed in an eDiscovery platform.

### eDiscovery ecosystem support

Druva integrates with market-leading, cloud-native eDiscovery tools to seamlessly collect, preserve, and upload data relevant to legal matters into eDiscovery platforms for review, analysis, and production.

### Pre-culling for minimized, relevant data sets

Pre-cull eDiscovery data by dimensions such as time range and keywords, so that only the most relevant, minimized data set is provided for downstream analysis by the legal team.

## Fastest download times

Fastest in our category eDiscovery data-download times so that data can be quickly provided to the downstream legal team.

## Legal and forensics investigations

Federated search of metadata attributes enable IT admins to quickly locate Microsoft 365 content for legal and forensic investigations and discover custodians.

## Preserve departing employees' data

Druva enables you to preserve departing employees' data, which may be relevant for present and future eDiscovery needs. This eliminates the need to pay for maintaining their Microsoft 365 licenses, obtaining higher Microsoft 365 editions, or quarantining their devices.

## Compliance

### GDPR, CCPA, and HIPAA support

Proactively monitor, with out-of-box, predefined, customizable compliance templates for potential violations of key global regulations like GDPR, HIPAA, and CCPA, and be alerted of these risks to quickly remediate violations.

### Customize and add compliance templates

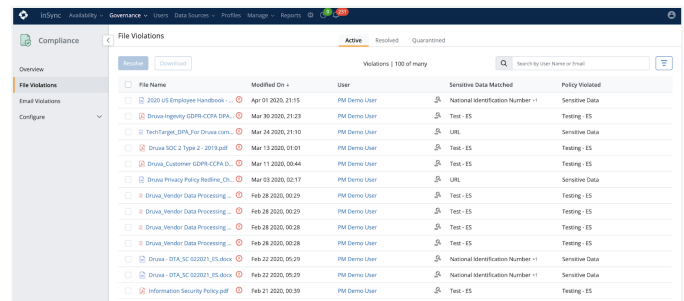
Easily customize pre-built compliance templates for global regulation and PII, or create your own templates for governance policies, including regulation or internal data governance policies.

### Defensible deletion

You can act on Druva's alerts to potential compliance violations by deleting files containing prohibited information from the backup, Microsoft 365 source, or both. User-generated content such as Mailbox or OneDrive data can be erased using metadata identifiers to comply with "Right to be Forgotten," such as the one contained in GDPR Article 17.

### Search for sensitive data

Federated search of metadata attributes enables IT admins to quickly locate Microsoft 365 files across all users and end-devices, in order to locate sensitive files or confidential documents that should be acted on such as defensible deletion or restricted use.



File Name	Modified On	User	Sensitive Data Matched	Policy Violated
2020 US Employee Handbook ...	Apr 01 2020, 21:15	PM Demo User	National Identification Number *	Sensitive Data
Druva Registry GDPR-CCPA DPA ...	Mar 30 2020, 21:23	PM Demo User	Test - ES	Testing - ES
TechTarget_BPA_For Druva.com...	Mar 24 2020, 21:10	PM Demo User	URLs	Sensitive Data
Druva SOC 2 Type 2 - 2019.pdf	Mar 11 2020, 01:01	PM Demo User	Test - ES	Testing - ES
Druva_Customer GDPR-CCPA D...	Mar 11 2020, 00:44	PM Demo User	Test - ES	Testing - ES
Druva Privacy Policy Redline_Ch...	Mar 03 2020, 02:17	PM Demo User	URLs	Sensitive Data
Druva_Vendor Data Processing ...	Feb 28 2020, 00:29	PM Demo User	Test - ES	Testing - ES
Druva_Vendor Data Processing ...	Feb 28 2020, 00:29	PM Demo User	Test - ES	Testing - ES
Druva_Vendor Data Processing ...	Feb 28 2020, 00:28	PM Demo User	Test - ES	Testing - ES
Druva_Vendor Data Processing ...	Feb 28 2020, 00:28	PM Demo User	Test - ES	Testing - ES
Druva - OFA_SIC 020201_05.docx	Feb 22 2020, 06:29	PM Demo User	National Identification Number *	Sensitive Data
Druva - OFA_SIC 020201_05.docx	Feb 22 2020, 06:29	PM Demo User	National Identification Number *	Sensitive Data
Information Security Policy.pdf	Feb 21 2020, 00:30	PM Demo User	Test - ES	Testing - ES

Centrally monitor and address compliance violations

## Data retention and DR compliance

The Druva Data Resiliency Cloud allows you to comply with industry data-retention regulation, via indefinite and customizable retention, and with industry disaster recovery (DR) regulations, which require full data isolation.

Druva helps some of the world's largest enterprises protect their investment in Microsoft 365, as well as other key data workloads from data loss and compliance violations – all from a single pane of glass.

[Check out the Microsoft 365 solution page](#) to discover how Druva can help you close the gaps in Microsoft 365 data protection to keep your data fully protected, employees productive, and meet business continuity SLAs.

**druva** Sales: +1 888-248-4976 | [sales@druva.com](mailto:sales@druva.com)

Americas: +1-800-375-0160  
Europe: +44 (0) 20-3750-9440  
India: +91 (0) 20 6726-3300

Japan: [japan-sales@druva.com](mailto:japan-sales@druva.com)  
Singapore: [asean-sales@druva.com](mailto:asean-sales@druva.com)  
Australia: [anz-sales@druva.com](mailto:anz-sales@druva.com)

Druva is the industry's leading SaaS platform for data resiliency, and the only vendor to ensure data protection across the most common data risks backed by a \$10 million guarantee. Druva's innovative approach to backup and recovery has transformed how data is secured, protected and utilized by thousands of enterprises. The Druva Data Resiliency Cloud eliminates the need for costly hardware, software, and services through a simple, and agile cloud-native architecture that delivers unmatched security, availability and scale. Visit [druva.com](https://druva.com) and follow us on [LinkedIn](#), [Twitter](#), and [Facebook](#).